

OUR AIMS

Provide opportunities for every child to develop skills for life long learning. (Article 28)

Create a nurturing environment which embraces and celebrates diversity. (Articles 3, 8)

Foster effective partnerships with pupils, parents and the wider community to ensure a sustainable future. (Articles 12, 29)



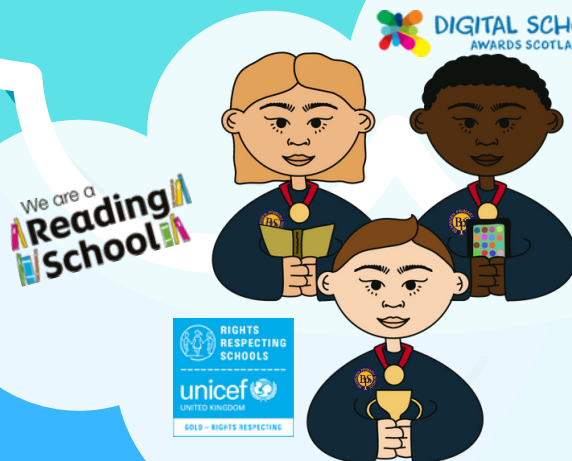
SUCCESSFUL LEARNERS

NUMERACY & MATHEMATICS
SOCIAL STUDIES
LANGUAGES

LITERACY & ENGLISH
EXPRESSIVE ARTS
TECHNOLOGIES

HEALTH & WELLBEING
SCIENCE
R.M.E

EFFECTIVE CONTRIBUTORS



INCLUSIVE EDUCATION

NURTURE
SUPPORT
ARTICLE 28

RELATIONSHIPS
GIRFEC
CHALLENGE



CULTURE
LANGUAGE
IDENTITY
RELIGION

BELIEF
UNIQUE

WIDER
ACHIEVEMENTS

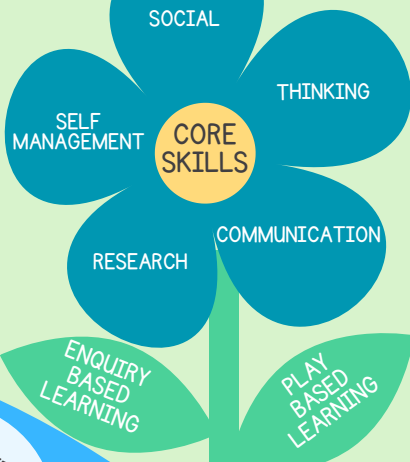
SUSTRANS LINKS

EXTRA CURRICULAR
ACTIVITIES

LEARNING FOR SUSTAINABILITY

TRANSITION

COMMUNITY
LINKS



EFFECTIVE CONTRIBUTORS

RESPONSIBLE CITIZENS

STAFF

TEACHING KITCHEN

BEARSDEN
EARLY YEARS CENTRE

UNIQUE

HERITAGE BUILDING

PEDAGOGY

